



## The WAMPO Region's Transportation E-Newsletter

### Transportation / Air Quality Document

Air quality has been a hot topic this year. There is much uncertainty over when national standards might change the maximum level of air pollution allowed, what the standards may be changed to, and if the area will exceed those standards. Because air quality is such an important issue and transportation has a direct impact on air quality, the Transportation / Air Quality Document was created.

The document provides basic information on air quality standards, how it is monitored, and what it means to exceed the standards. It discusses what the key air quality issues are for the region and transportation strategies to improve or enhance the region's air quality.

The document was adopted in August and can be accessed online through the link below.

[Transportation / Air Quality Document](#)

### Increasing Bicycle and Pedestrian Access

Exciting things are afoot in the WAMPO region. Several projects are in process, or have been selected for funding, that will add to the region's bicycle and pedestrian system. In addition, new and updated bicycle and pedestrian plans are in the pipeline for 2011. All these activities will help achieve a short-term objective of the Metropolitan Transportation Plan (MTP) 2035 "to increase multimodal options and access."

- Two bicycle / pedestrian projects were selected by the Kansas Department of Transportation (KDOT) to receive federal Transportation Enhancement (TE) Funds. The projects are the Redbud trail in Wichita, and a multiuse path along James Street in Derby. Both projects are listed in the MTP 2035.
- Wichita Transit is using American Recovery and Reinvestment Act (ARRA) funds to install bike racks at numerous locations around the City of Wichita.
- The City of Wichita is in the process of restriping both 1<sup>st</sup> and 2<sup>nd</sup> Street to include bike lanes from I-135 to Edgemoor.
- Valley Center will begin work on a pedestrian and bicycle facilities master plan in 2011. And WAMPO will begin work on updating the Regional Pathway System Plan (RPSP).

These are all exciting additions to improve mobility, make the region's transportation system accessible for all forms of travel, and potentially help mitigate air quality issues.

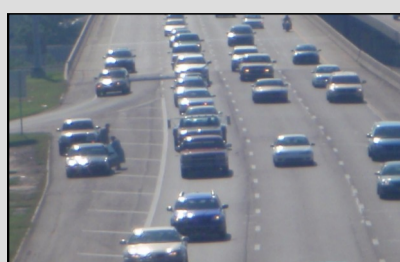
### 2011 Transportation Improvement Program

The Transportation Improvement Program (TIP) is the short-range plan that identifies which projects are anticipated to be funded with federal transportation funds. It also includes projects that are regionally significant but funded with non-federal funds.

The federal transportation funds can be WAMPO Competitive Funds (funds that are allocated to the region), or Non-Competitive Funds (a mixture of funds that may be dedicated to counties, or funds that project sponsors compete for through a different process).

The 2011 TIP was adopted by the Transportation Policy Body (TPB) on September 14, 2010. The document will soon be available and accessible through WAMPO's [publications page](#).

Fall 2010, Issue 8



### Did you Know?

Over 1/3<sup>rd</sup> of ozone causing emissions in the Wichita area are from motor vehicles.

WAMPO will update the Congestion Management Process (CMP) in 2011. The CMP helps identify strategies to mitigate emissions caused from motor vehicles.



*Midtown Greenway multiuse path in Wichita*

### Did you Know?

The Intermodal Surface Transportation Act (ISTEA) of 1991 was the first federal transportation bill to include Transportation Enhancements.

Since then, 36 projects in the region have received TE awards, 27 of which are bicycle / pedestrian facilities.



*I-135 / Kellogg Construction*

## [Check out WAMPO on Facebook](#)

### SCHEDULE OF EVENTS

*The following meetings are held at:  
455 N. Main—10th Floor, Wichita, KS*

#### Transportation Policy Body

**October 12, 2010**  
3:00 P.M.

**November 9, 2010**  
3:00 P.M.

**December 14, 2010**  
3:00 P.M.

#### Technical Advisory Committee

**October 25, 2010**  
10:00 A.M.

**December 6, 2010**  
10:00 A.M.

## W A M P O

Wichita Area Metropolitan Planning Organization

[www.wampoks.org](http://www.wampoks.org)

10<sup>th</sup> Floor · 455 N. Main · Wichita, KS · 67202-1688  
Phone: (316) 268-4391 · FAX: (316) 268-4390